

QUALITY ENGINEER

Rheinland-Pfalz,
Germany

frankie@elemed.eu

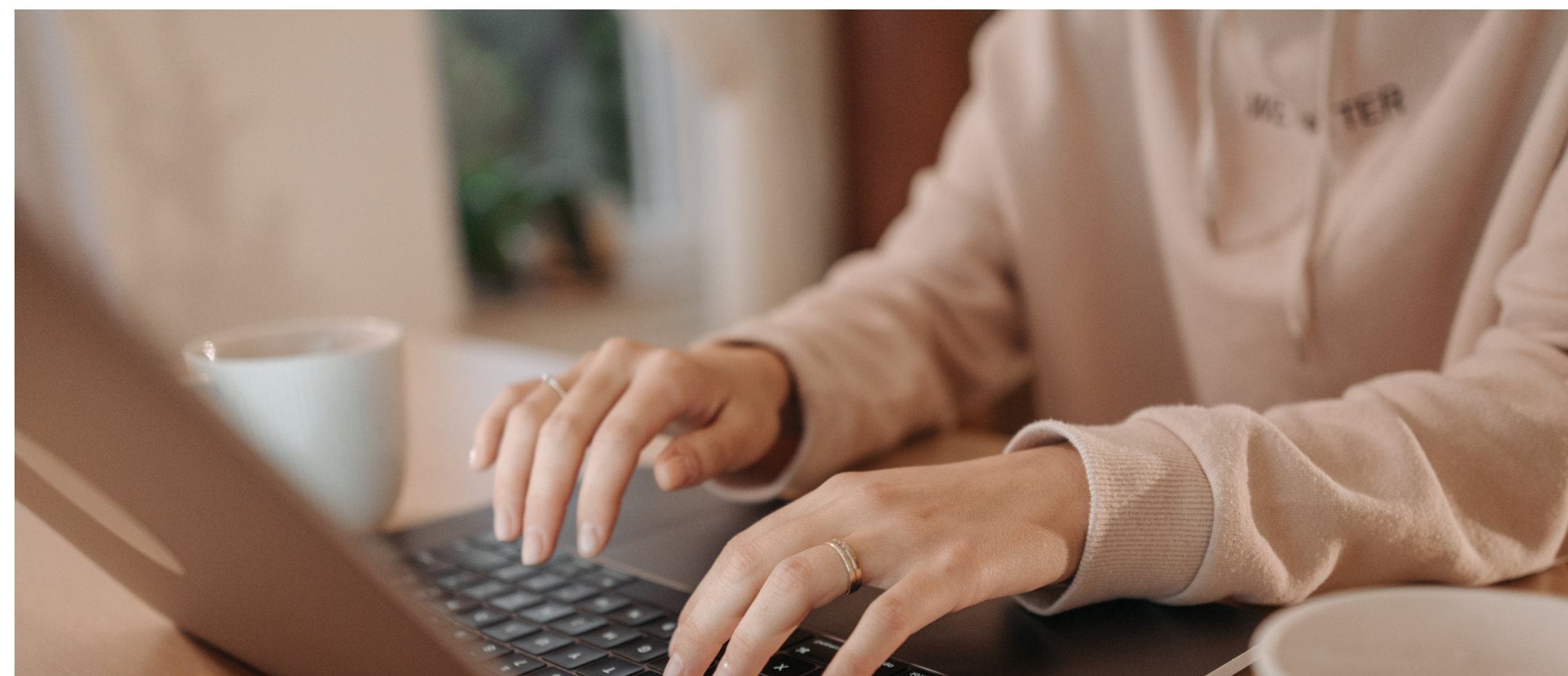


THE COMPANY

Do you like working with product development teams to meet EU MedTech Regulations? Do you see yourself bridging the medical technology sectors and automated machinery sectors? Do you enjoy implementing quality systems early on in the design and development stage?

Here is a rare and great opportunity to join a multinational leader in medical devices & technology and be part of this industry's digitalisation journey. As the Quality Engineer in Germany, you will be based at their German headquarters, where they have centralised R&D, development, production, and commercial teams all in one place.

This is a company-critical role and your experiences in implementing quality management systems from the medical devices and technology world will help automation and machine-equipment engineers to understand and meet upcoming EU regulations.



YOUR RESPONSIBILITIES

- Identify areas of improvement at the product development and design control stages and ensure there will be continuous improvement
- Create, manage, implement, and take ownership of quality engineering processes for R&D projects - including planning, risk mitigation, maintaining compliance to external and internal standards
- Review past designs and processes and write verification & validation documents, analyse risks, work with cross-function teams to write documents on the deliverables, conduct failure analysis, and report on key quality metrics



QUALIFICATIONS

- At least 2 years of experience in Quality Assurance and working with product development or design control teams
- Experience within either the medical device or automotive industry required
- Fluent written & spoken German and some English
- Office-presence 4 days per week

LEARN MORE

If you are interested in this exciting role, please send your application directly to

FRANKIE@ELEMED.EU

Would you like to find out more about our open opportunities? Visit <https://www.elemed.eu/vacancies/>

