

elevMed

WE ARE LOOKING FOR YOU!

MARKET INTELLIGENCE ANALYST

FRANCE/GERMANY/SWITZERLAND





WHO ARE WE?

At Elemed, we recruit the people that get amazing medical technology to patients all over the world. From life saving products such as artificial hearts to innovative cancer fighting radiotherapy machines, the people we place truly change lives and we are proud to be a part of that.

Our clients range from startup companies of 5 people, to global corporations with locations all over the world. Today, our focus is roles based in the major European markets like Switzerland, France, Germany, NL and our aim is to become the overall EU market leader in medtech talent management.

We are a multicultural, diverse and young team headquartered out of Finsbury Square. Will you join us as our Market Intelligence Analyst?

Your mission

As our market intelligence analyst you will be responsible for building up a complete picture of who's who in the medtech industry, mapping out relationships and networks, and keeping your finger on the pulse of the changes driving the industry. Your findings and insights will support our recruitment team to match the best candidates with the best companies and truly impact people's lives



YOUR TASKS WILL INCLUDE

- Develop a constantly evolving market map of the medtech industry looking at Key companies, people, influencers, across your specific focus area and geography.
- Use data insights to map key organizational structures in companies, (figuring out who works where and who knows who), to identify potential business opportunities
- Use advanced search methodologies (we will teach you how!), to support the recruitment team to identify and reach top talent within the industry
- Keeping a finger on the pulse of Mergers, Acquisitions, and anything that might lead to movement within the market, headhunting and reaching out to candidates to propose them new opportunities
- To uphold the company's values and service
- Drive leads into the client facing team through CV profiling, reference checking, candidate interviewing and questioning.
- Developing automated alerts based on key movement triggers and drive leads into the BD team
- Converting target cold candidates to warm candidates within our community
- Championing the use of our CRM, to manage, update, record and document all conversations, candidate records and actions.
- Any other relevant ad-hoc duties as required by the Director
- CV preparation and own administration

OUR VALUES



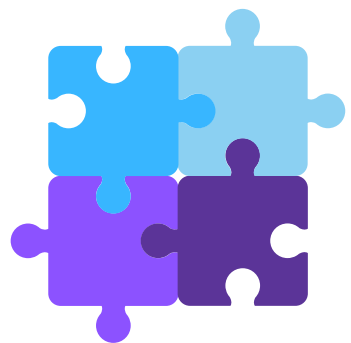
FORWARD THINKING

We do things differently. We find creative and innovative solutions for our community. We lead the way.



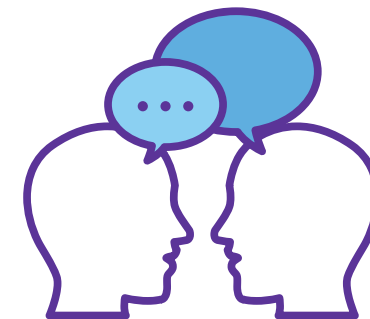
STRIVING FOR EXCELLENCE

We don't settle for average. We work hard to exceed expectations. We are passionate about everything we do.



COLLABORATION

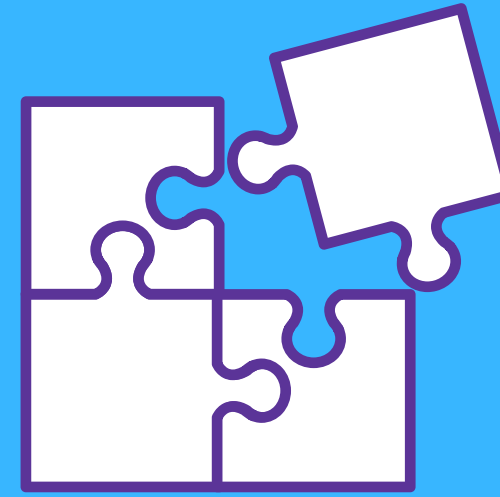
We are a team with a common purpose. We share, we support, we celebrate. Collaboration is the key to our success.



HONESTY

We believe in transparency and two-way communication. Be straightforward, upfront and supportive.

WHAT WE ARE LOOKING FOR?



This role is perfect for someone with a can do attitude and excellent attention to detail



Honest, upfront and
direct
communication
style



1.5+ years of
experience working
in a role that
requires excellent
analytical and
people skills



Native French or
German speaker



Resilient, creative,
curious, process
driven, and able to
build relationships



If you think you can bring any
of the above to Eleméd we
would LOVE to hear from you!

Send your application to
elena@elemed.eu.

Good Luck!